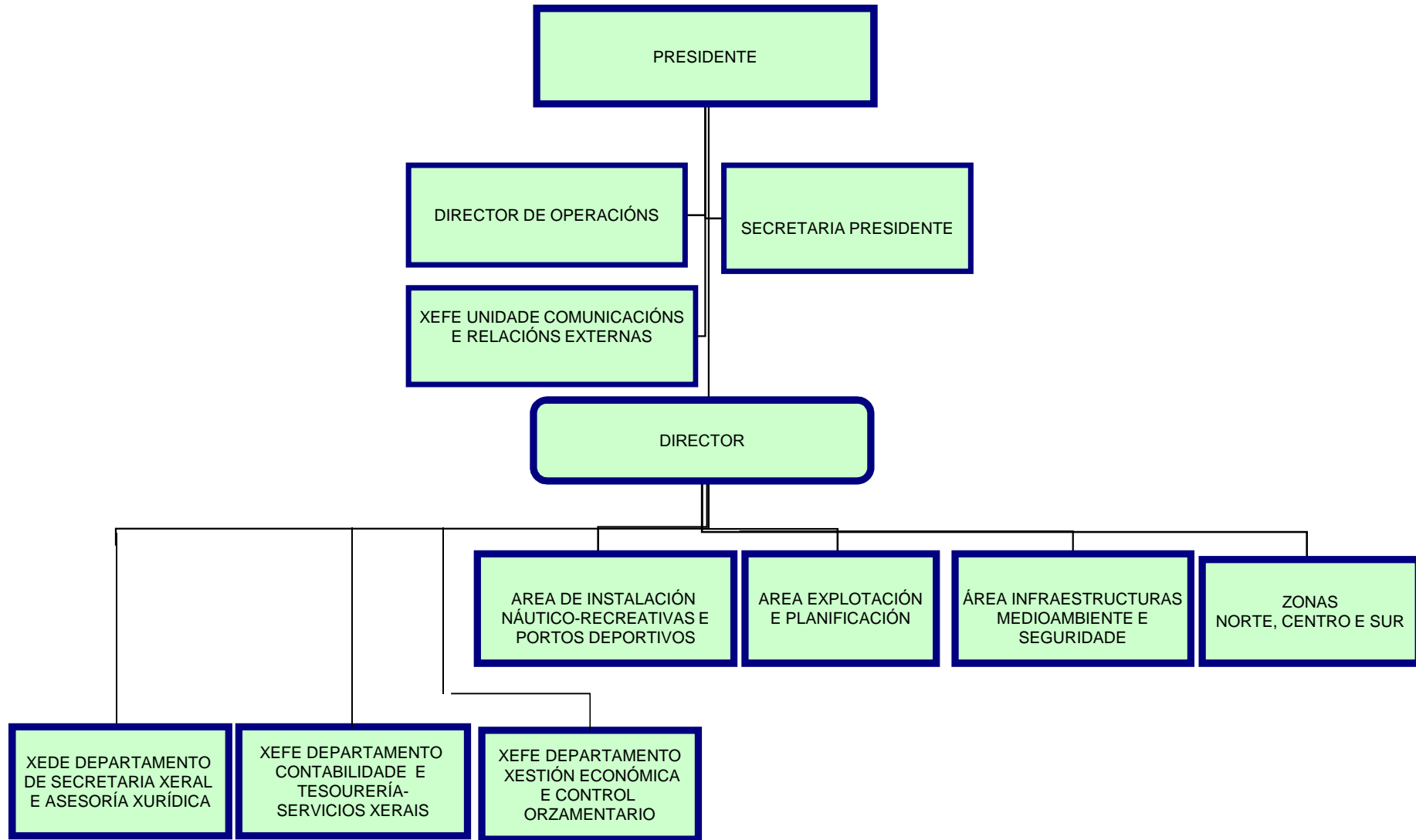
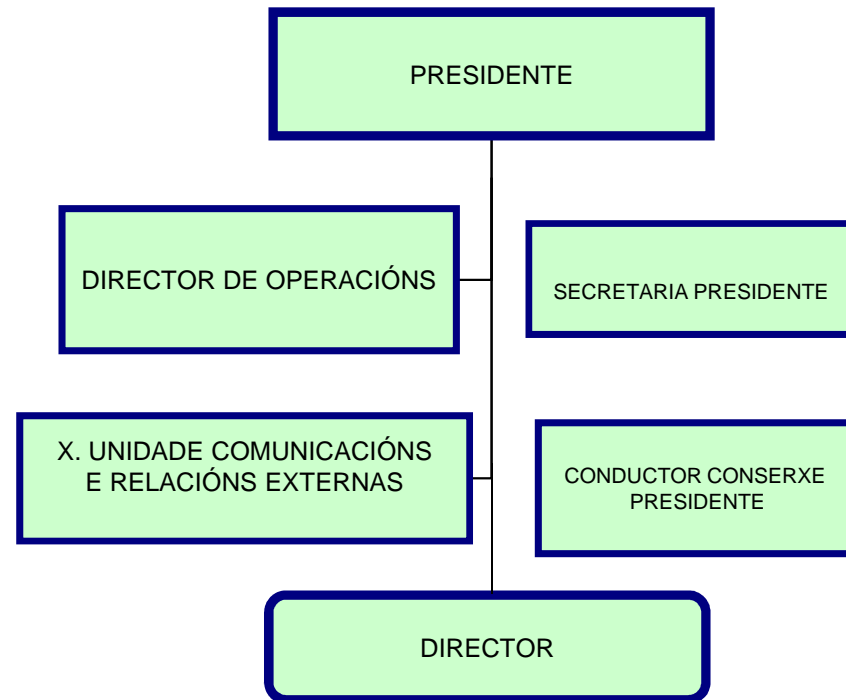


ENTE PÚBLICO PORTOS DE GALICIA

ESTRUCTURA ORGANIZATIVA



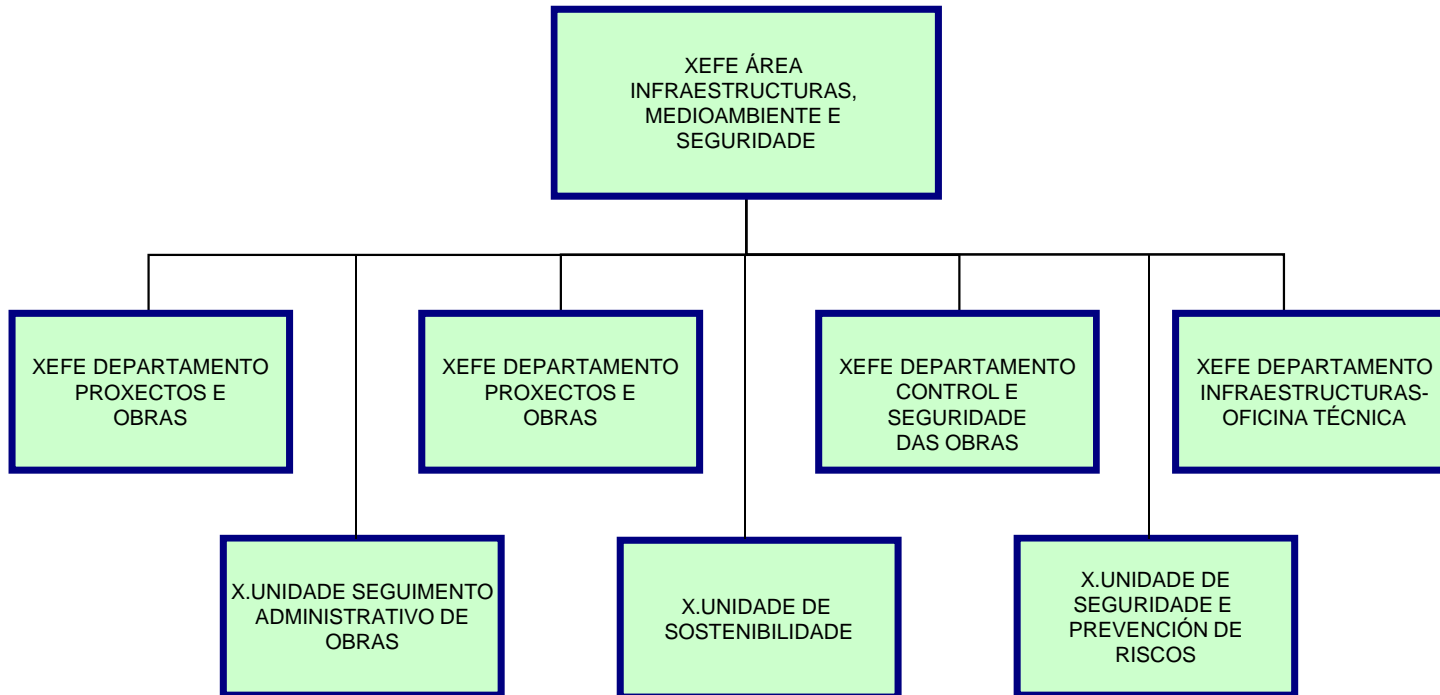
PRESIDENCIA



DIRECCIÓN



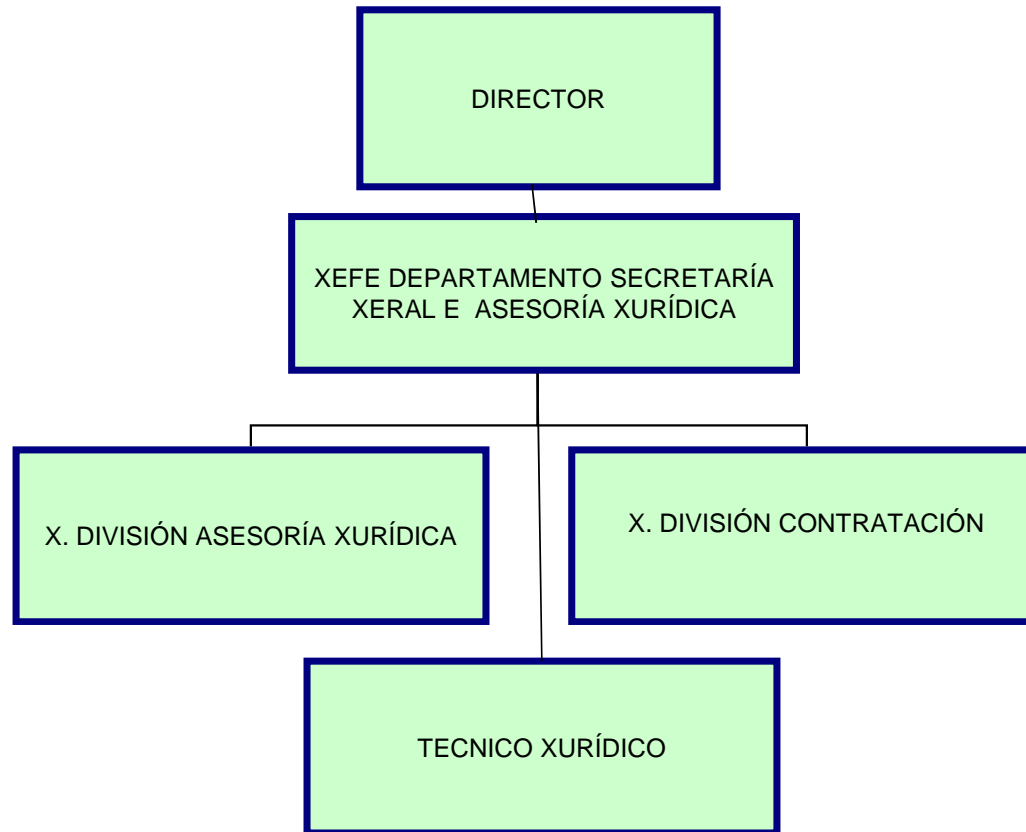
ÁREA INFRAESTRUCTURAS, MEDIOAMBIENTE E SEGURIDADE



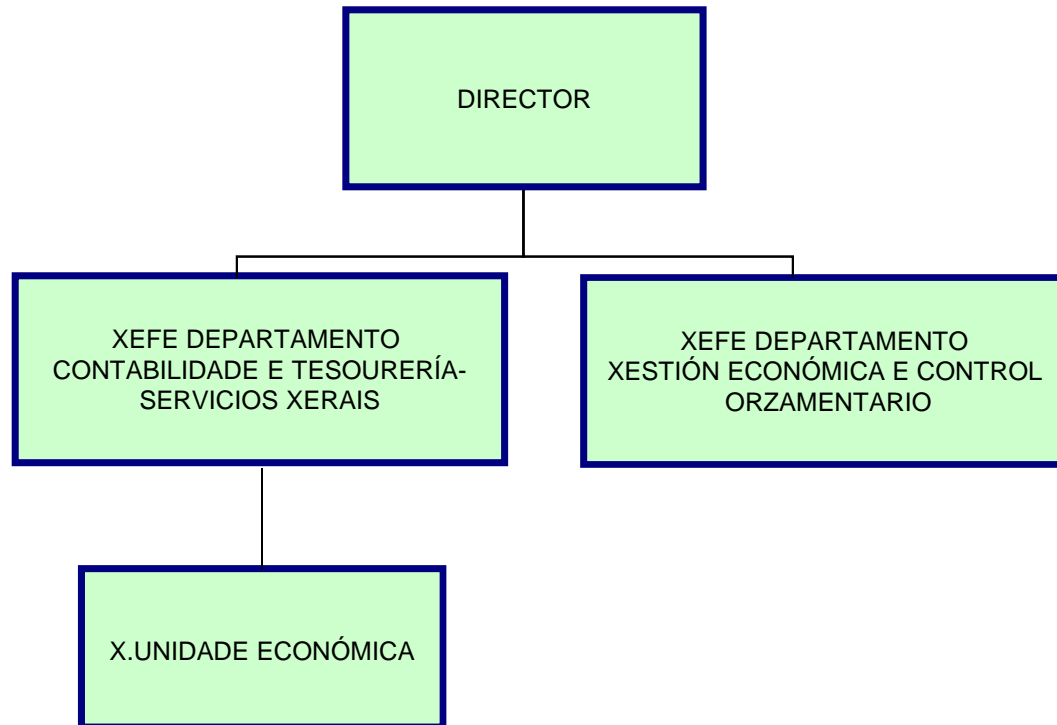
AREA DE INSTALACIONES NAUTICO-RECREATIVAS E PORTOS DEPORTIVOS



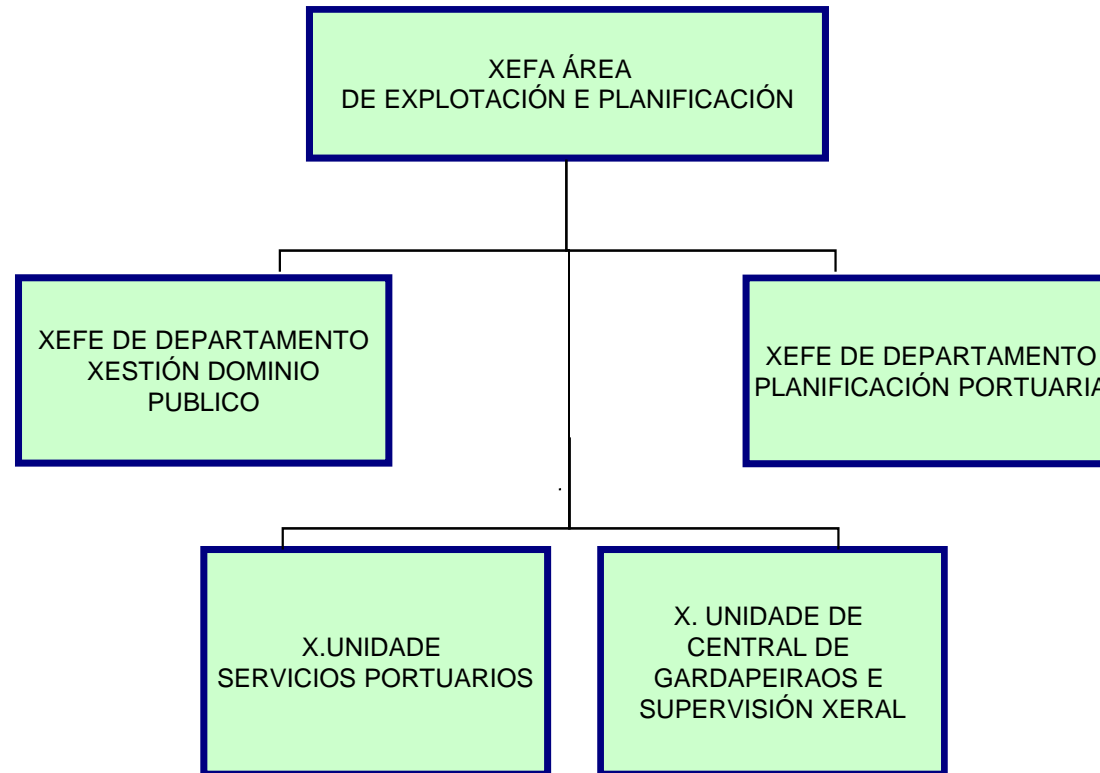
SECRETARÍA XERAL E ASESORÍA XURÍDICA



DEPARTAMENTO CONTABILIDADE E ORZAMENTOS-SERVICIOS XERAIS



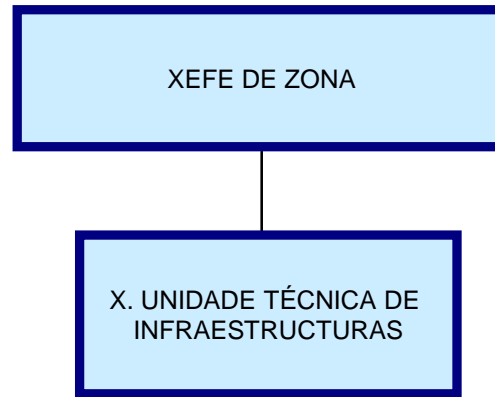
ÁREA DE EXPLOTACIÓN E PLANIFICACIÓN



ZONA CENTRO

XEFE DE ZONA

ZONA NORTE



ZONA SUR

XEFE DE ZONA