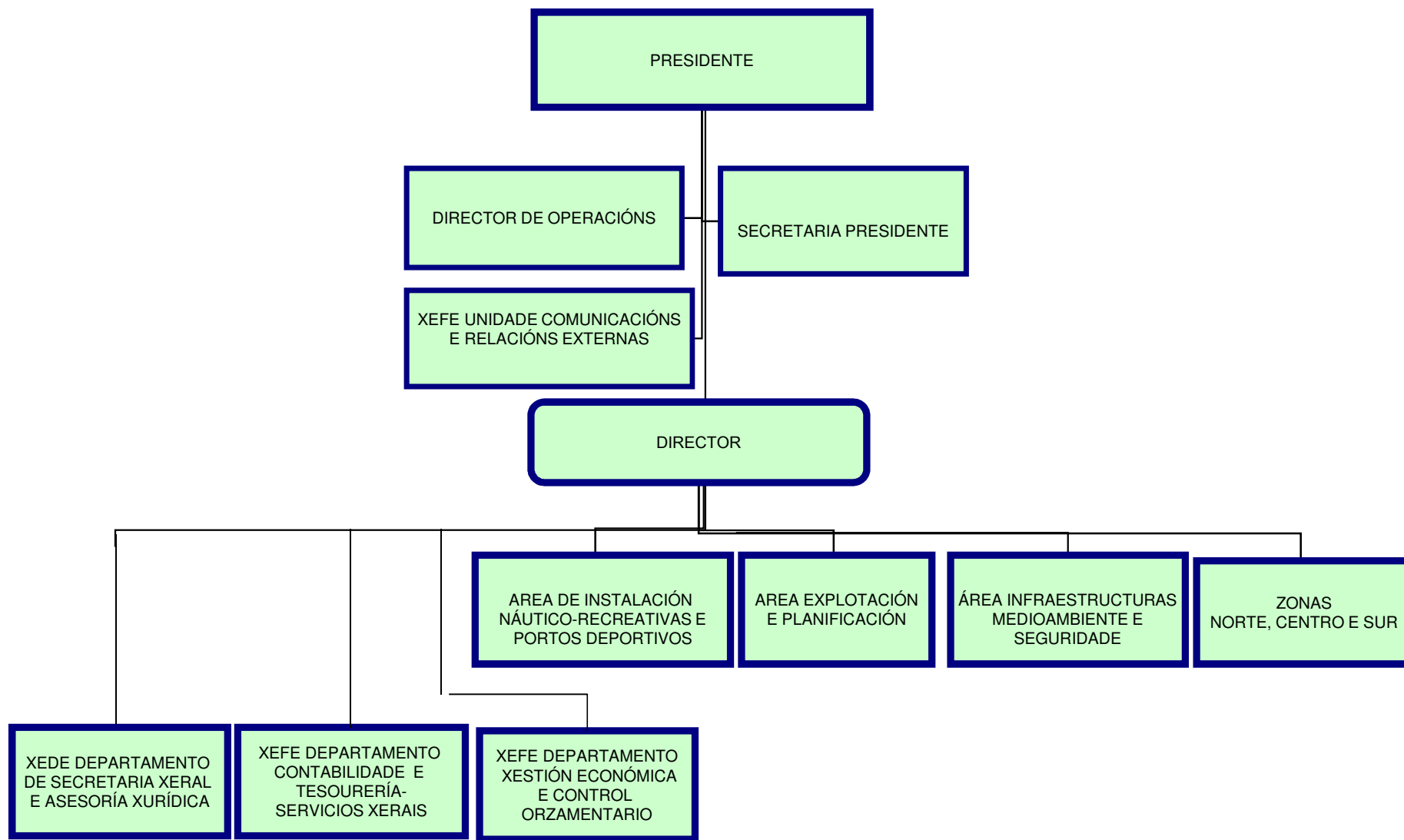
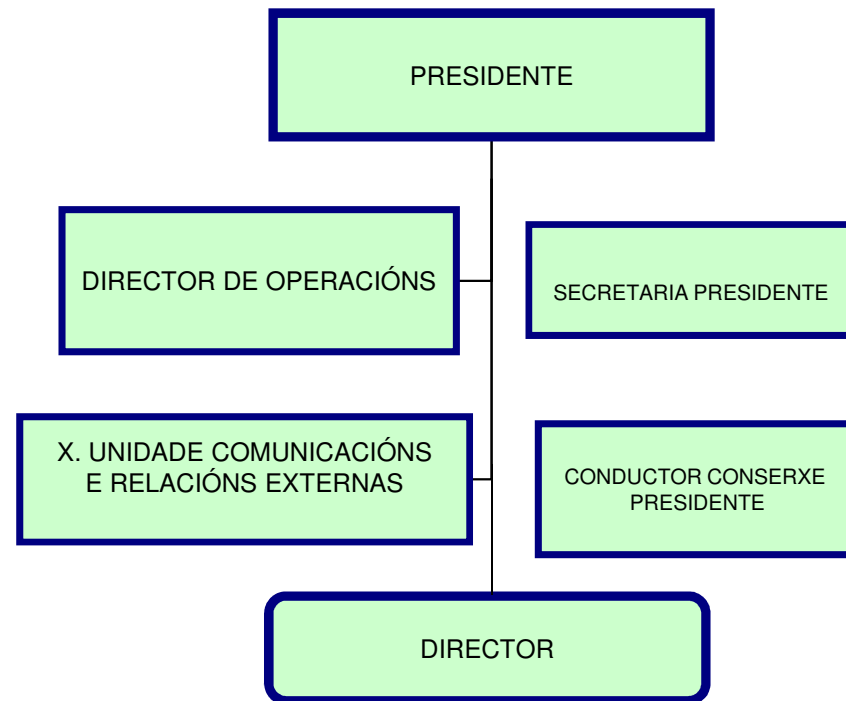


# ENTE PÚBLICO PORTOS DE GALICIA

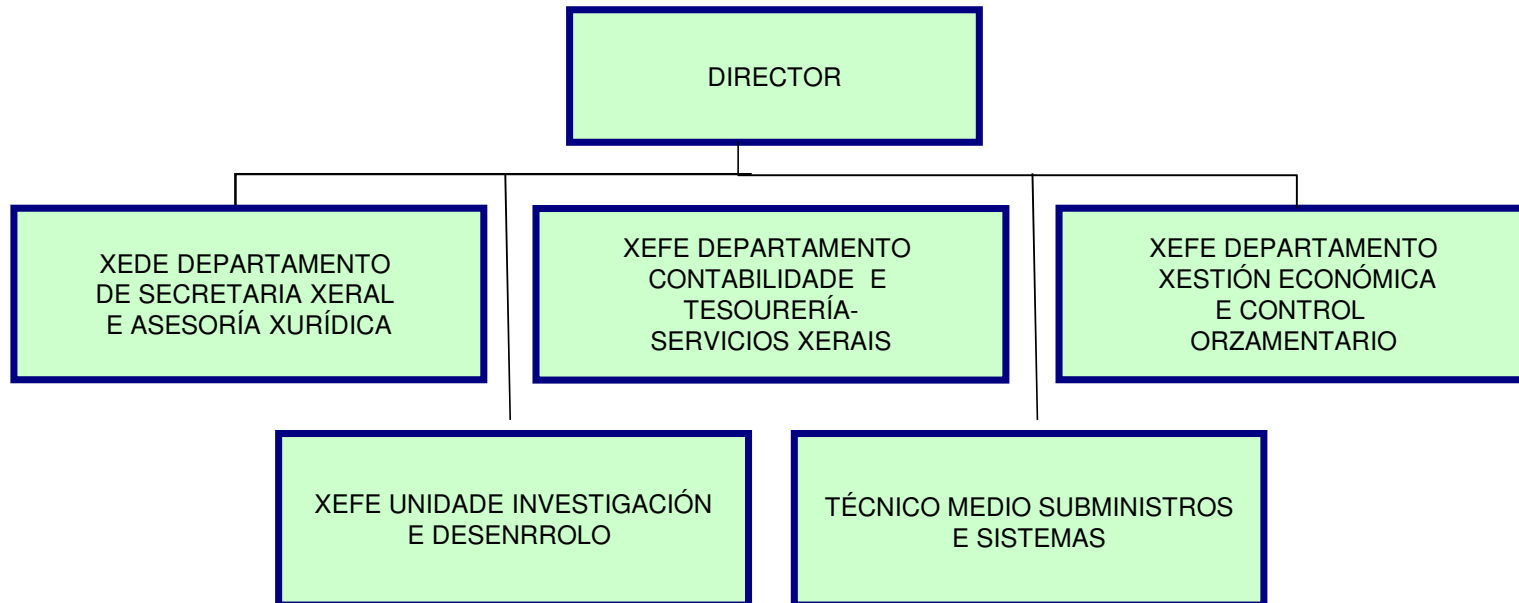
## ESTRUCTURA ORGANIZATIVA



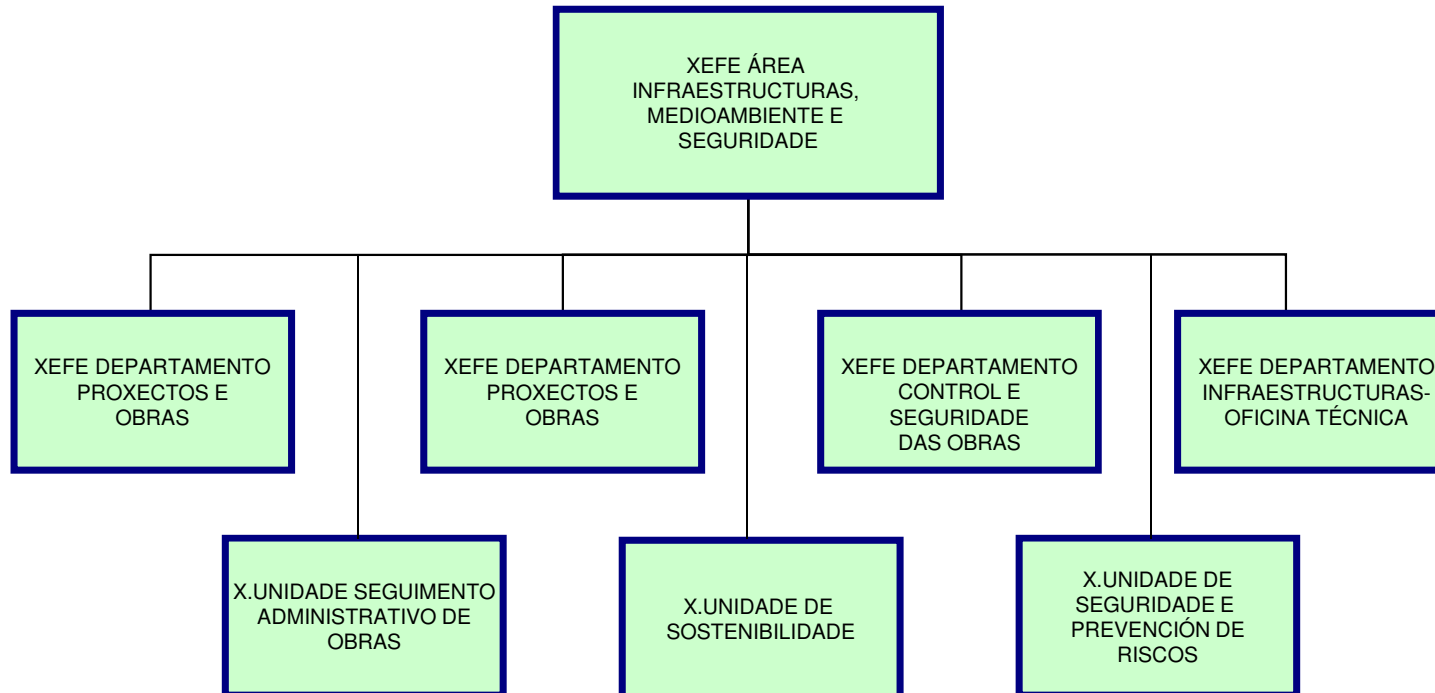
# PRESIDENCIA



# DIRECCIÓN



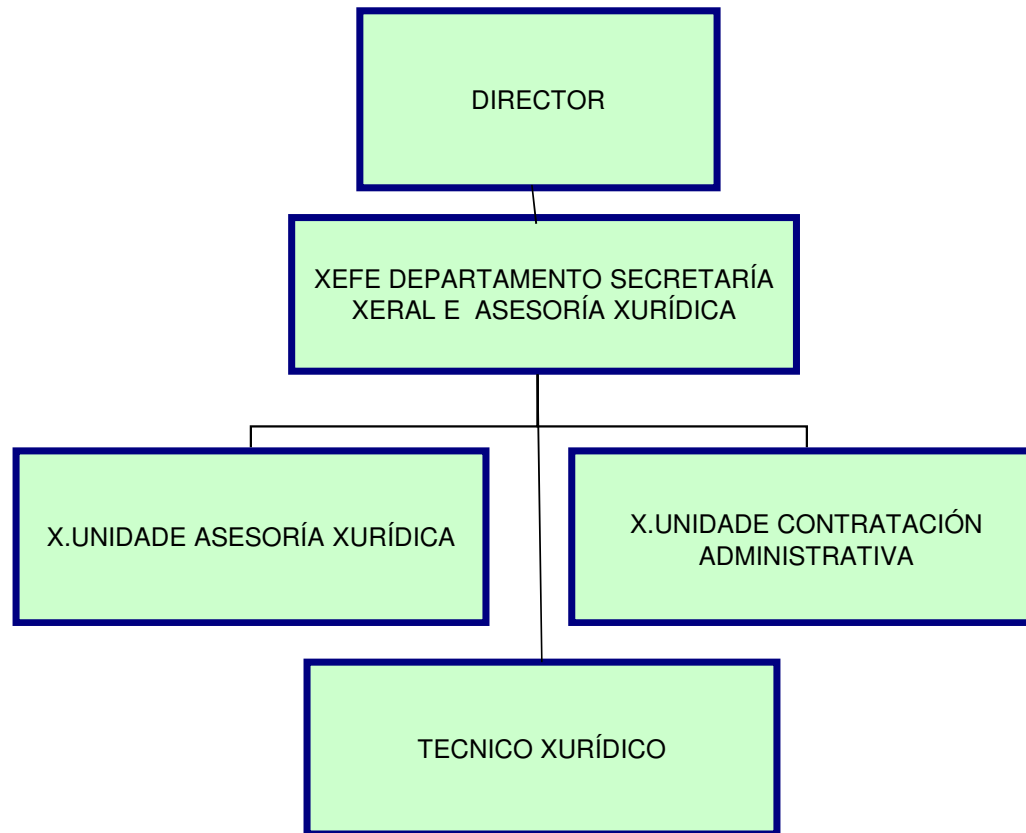
# ÁREA INFRAESTRUCTURAS, MEDIOAMBIENTE E SEGURIDADE



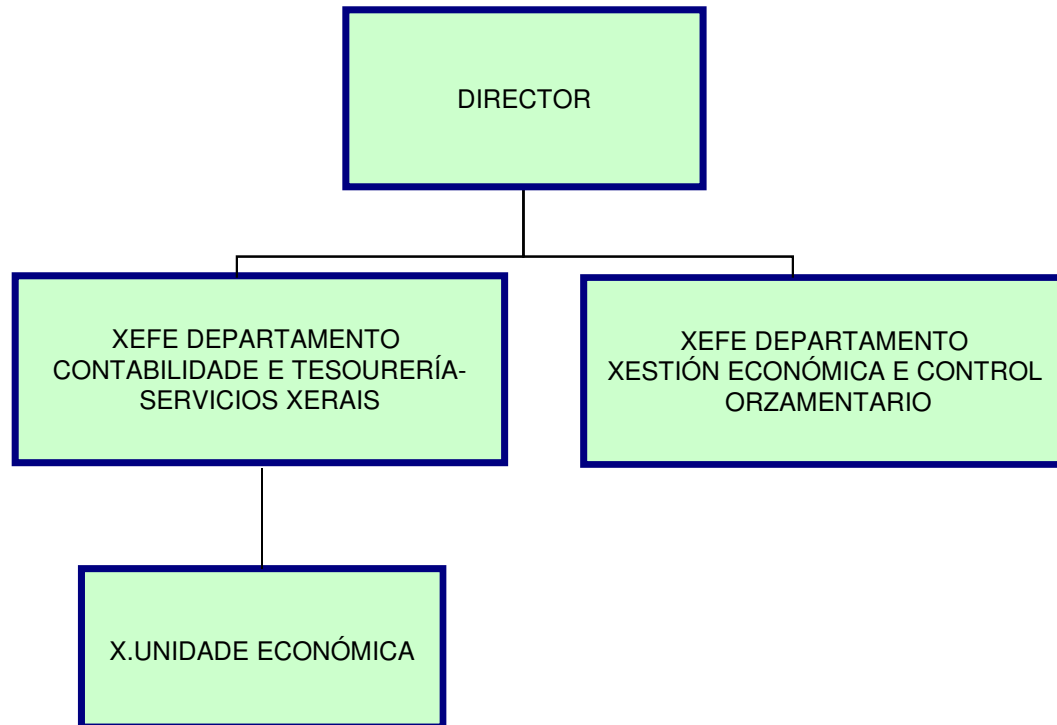
# AREA DE INSTALACIONES NAUTICO-RECREATIVAS E PORTOS DEPORTIVOS



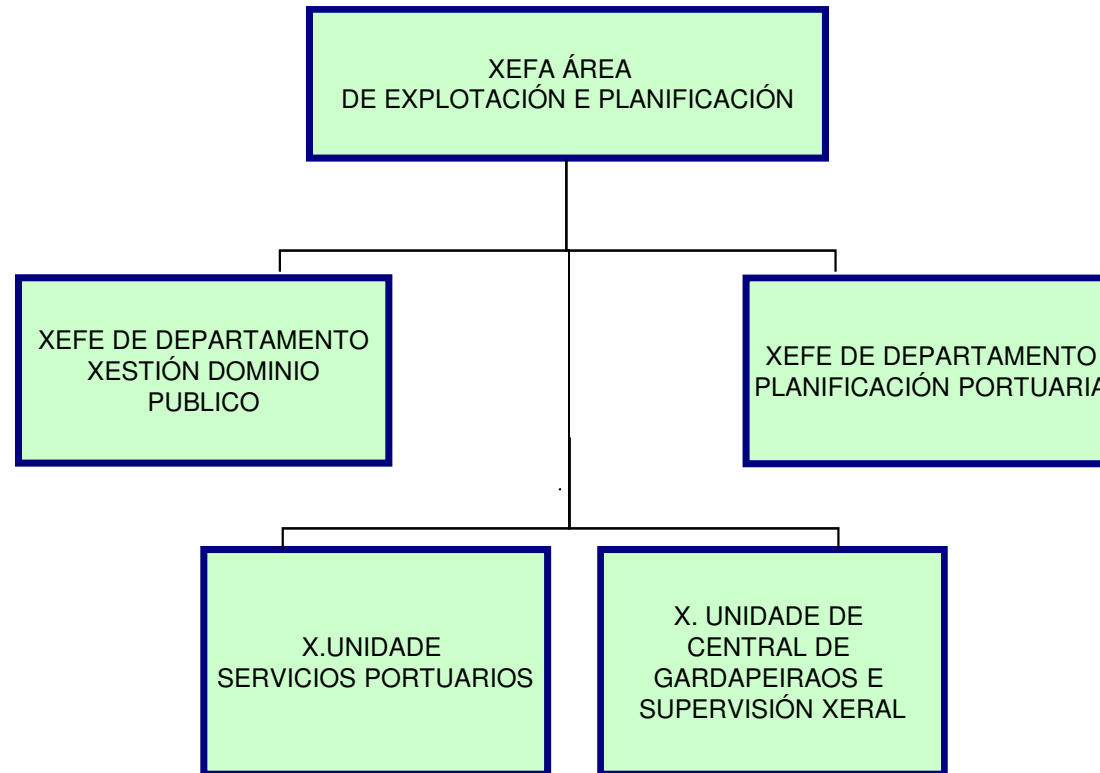
# SECRETARÍA XERAL E ASESORÍA XURÍDICA



# DEPARTAMENTO CONTABILIDADE E ORZAMENTOS-SERVICIOS XERAIS



# ÁREA DE EXPLOTACIÓN E PLANIFICACIÓN

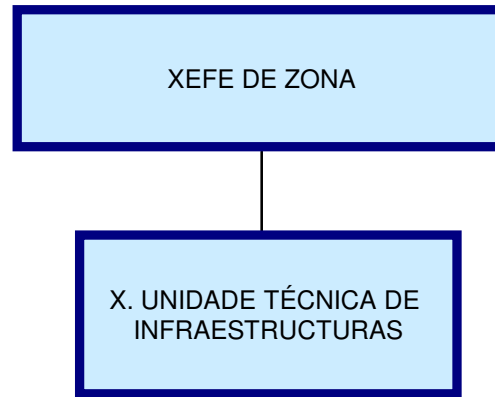




# ZONA CENTRO

XEFE DE ZONA

# ZONA NORTE



# ZONA SUR

XEFE DE ZONA